

Award Received

National 4 / National 5

Entry Level: What do I need to do it?

A genuine interest in studying Art and Design. You should be willing to keep up with your portfolio of work throughout the year and develop your skills both during class time and outwith when needed.

Course Content: What will I learn?

You will develop your ideas and creativity, experiment and be inspired by the work of practicing artists and designers. You will enjoy creating things with your hands and get a great sense of achievement from this. At the end of the course, you will have the opportunity to exhibit your work. You will be encouraged to choose themes which interest and inspire you and you will develop your confidence and skills.

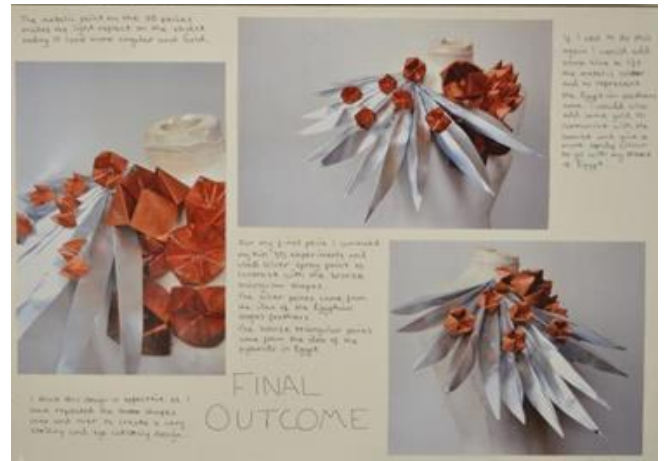
In the Expressive project, you will...

- Choose a theme for your project, with guidance from your teacher
- Develop skills in drawing, painting, printmaking and sculpture
- Work through a creative process
- Use your imagination and creativity
- Take inspiration from different artists
- Evaluate your own work



In the Design project, you will...

- Work from a Design Brief, which you will create with guidance from your teacher. This could be either jewellery, mask, fashion or graphic design
- Think critically, plan and problem solve to find a solution to your design brief
- Experiment with different materials, and techniques
- Take inspiration from relevant designers, learning about their process and how they work



Teaching Methods: What will I do?

You will learn techniques during skills building workshops. You will work on individual projects with tutoring from your teachers.

Assessment: How will I be assessed?

At National 4 level, your work will be assessed as pass or fail by your teachers, with verification from the SQA.

In the National 5 course, you will produce Portfolios in both Expressive and Design. These Portfolios will then be sent to the SQA for assessment. Your practical work is worth 80 % of your overall mark at National 5. You will then sit a written exam where you will analyse art and design works, which is worth 20% of your final mark.

Homework.

You will be required to keep up with the deadlines of the course. You may do this within class time if you are well organised, or you can catch up during extra art sessions at lunchtime and after school. Weekly homework tasks will be given to prepare you for the written exam.

Progression in the Senior Phase.

You can progress from National 4 to National 5 and from National 5 to Higher Art and Design.