

Award Received

Higher Art and Design.

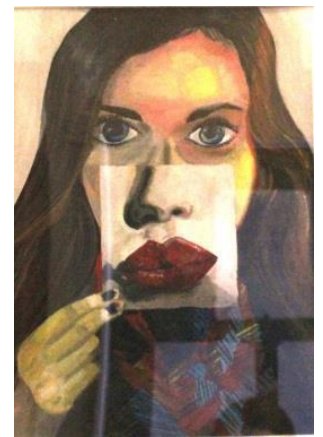
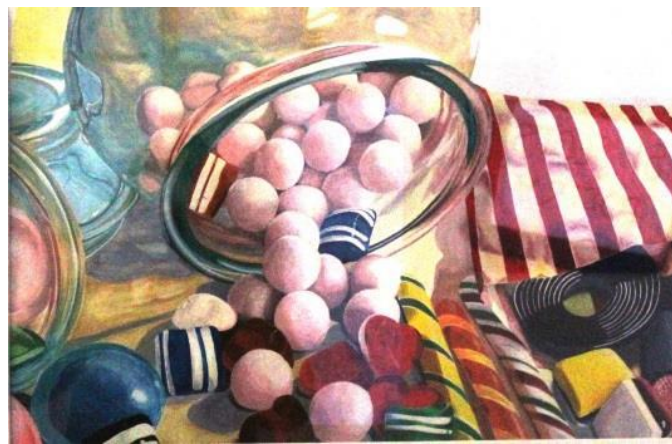
Entry Level: What do I need to do it?

National 5 Art and Design is the best preparation for this course, although you may choose to take Art and Design as a Higher in S5 or 6 having studied Art and Design to S3 level. This will be decided after discussion with the Art Department and will depend on your skill level and commitment. You should have a genuine interest in studying Art and Design. You should be willing to keep up with your portfolio of work throughout the year and develop your skills both during class time and outwith when needed.

Course Content: What will I learn?

The Higher Art and Design course is a natural progression from National 5 Art and Design. The structure of the course is very similar so you will be well prepared. In Higher Art, you will have much more freedom over what themes and inspirations you choose. Having built your confidence in using different materials and techniques at National 5 Level, you will be able to make choices over which materials to use.

Expressive Project : Externally Assessed Portfolio



You will choose a strong theme for this which is of personal interest to you, with the guidance of your teacher. You may work from objects or take photographs which you can manipulate in PhotoShop and develop into different ideas. You will also study the work of artists working in similar styles to your own project. This will deepen your understanding of materials and techniques and support the practical work which you do in class.

Design Project : Externally Assessed Portfolio



Playing to your strengths, you will develop a Design Brief which is of interest to you and suits your style of working. This may be Jewellery Design, Architectural Design, Graphic Design or Fashion Design. You will work through a design process, developing ideas through drawing, PhotoShop and experimenting with materials and techniques, before creating a final piece of design.

Teaching Methods: What will I do?

You will learn techniques from your teacher, who will deliver workshops to build up your skills. You will work on individual projects with tutoring from your teacher. The written element of the course will be delivered as whole class teaching.

Assessment: How will I be assessed?

The Portfolios of work for Expressive and Design will be sent to the SQA for assessment. Your practical work carried out in class is worth 77% of your overall mark at Higher. You will then sit a written exam where you will analyse art and design works, similar to the exam at National 5 level. This is worth 23% of your mark.

Homework.

You will be required to keep up with the deadlines of the course and your classwork is very important as it makes up 73% of your overall mark. You may do this within class time if you are well organised, or you can catch up during extra art sessions at lunchtime and afterschool. Weekly homework tasks will be given to prepare you for the written exam.

Progression in the Senior Phase.

You can progress to the Advanced Higher Art and Design course, which will allow you to carry out a personal project in EITHER Expressive OR Design. This course will support you in preparing a portfolio for art college entry.